

BEFORE YOU BEGIN



Download the SureCall App in the Google Play or Apple's App Store. Just search, "SureCall"

FLARE IQ APP:

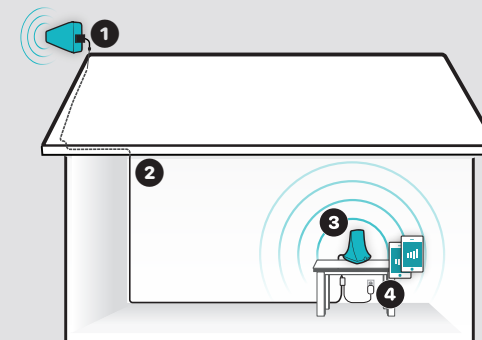
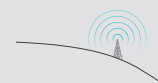
Use the app to help with two important aspects of any signal booster setup:

Proper aiming of the outside antenna and ensuring adequate separation between the outside antenna and the inside booster/antenna.

OVERVIEW:

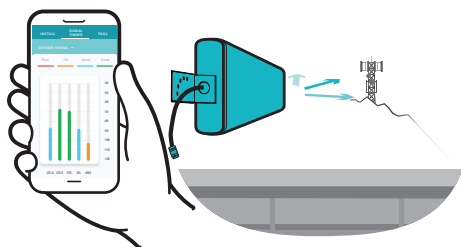
Set up the ❶ Yagi antenna, run the included ❷ RG-6 cable (50 ft) into your home and place the ❸ Flare booster in a central location improved signal is needed.

Once the ❹ power supply is connected and the booster is plugged in, use the app to identify the best location and angle for your outside antenna.



IMPORTANT

OUTSIDE SIGNAL STRENGTH

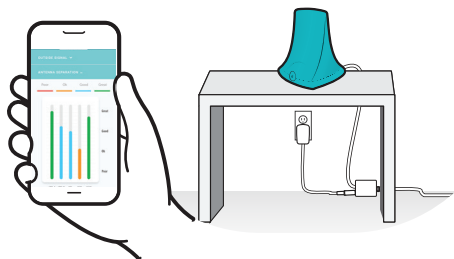


Performance is **LARGELY BASED ON** your outside signal **STRENGTH**. If signal is weak where the outside antenna is installed, indoor coverage will be limited.

Mounting the outside antenna where the signal is the strongest yields the best possible results. Generally, this is above the roof line, on the side of facing your carrier's nearest cell tower.

Using the Flare iQ mobile app to wirelessly connect to your booster, identify the best location and angle for your antenna by reading signal strength in real time.

ANTENNA SEPARATION



Place the booster in a central location where signal is needed.

Maintain a distance of at least vertical 25 feet, up to 50 feet of horizontal distance, especially if vertical distance cannot be achieved.

Check antenna isolation on the app. The results reflect whether you have achieved adequate separation between the booster and antenna.

QUESTIONS?

✉ support@surecall.com

📞 1-888-365-6283